

ALBERTA'S WOODLAND CARIBOU



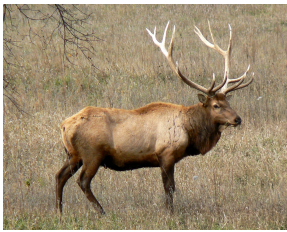

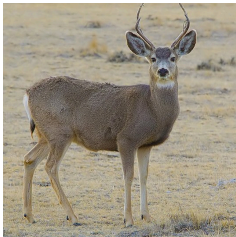

For Students

Instructions: Complete the activities to learn all about Alberta's amazing Woodland Caribou!

Part 1: Ungulates

Alberta has eight species of wild **ungulates**. An ungulate is an **animal with hooves**.

Can you identify Alberta's ungulates? Choose from: *Bighorn Sheep, Mule Deer, Whitetail Deer, Moose, Mountain Goat, Caribou, Bison and Elk*. Write the species name next to its photo.



Part 2: Adaptations


Instructions:

- 1) Double click to open the drawing
- 2) Place each 'body part' label on the caribou
- 3) Place each 'adaptation' label next to the correct body part

Directions

Place each body part label on the caribou.

Place the adaptation label next to its corresponding body part.



Body Parts

Antlers

Tail

Hooves

Fur

Stomach

Nose

Adaptations

I help dig for lichens in the ground and I am shed every year

I am small and short to minimize heat loss

I have specialized bacteria that allow lichens to be digested

I act like snowshoes by staying above the snow

I can sniff out lichen that is buried 1.5m under snow

I am double layered; 'underfur' is designed for warmth and 'guard fur' is hollow for buoyancy while swimming

A **physical adaptation** is a **physical body part** that helps an animal to survive.

→ Ducks having webbed feet is an example of a physical adaptation!

A **behavioural adaptation** is a change in the **way an animal acts** that helps it to survive.

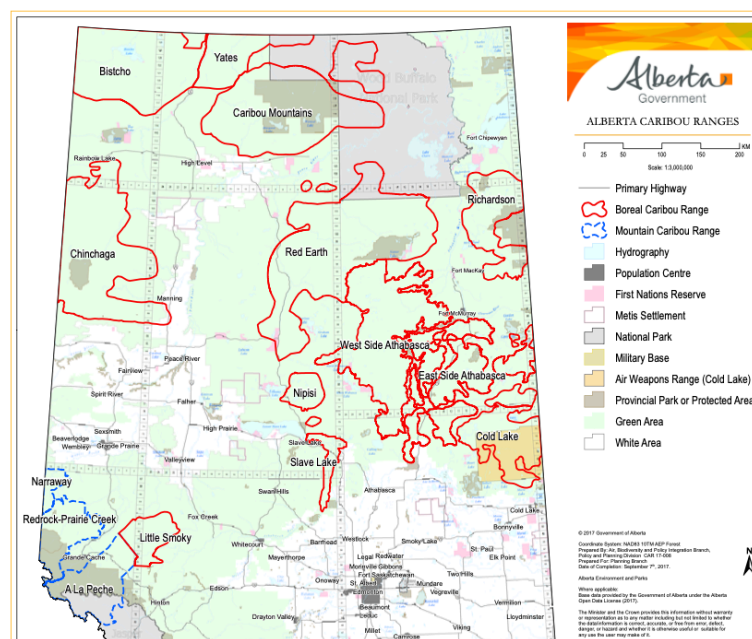
→ Birds migrating south in the winter is an example of a behavioural adaptation!

Caribou have many adaptations that help them survive in Alberta. Decide if the following caribou adaptations are **physical adaptations** or **behavioural adaptations**.

- 1) Caribou hooves are large, working like paddles to help caribou be strong swimmers.
Physical or behavioural adaptation? _____
- 2) Some Woodland Caribou in Alberta migrate each year between their summer and winter range.
Physical or behavioural adaptation? _____
- 3) Caribou have a four-chambered stomach, which allows them to eat large quantities of lichen and digest its nutrients efficiently.
Physical or behavioural adaptation? _____

Part 3: Caribou in Alberta

In Alberta, we have two types of Woodland Caribou - Mountain Caribou and Boreal Caribou.
Open this [Alberta Caribou Range Map](#).



- 4) What do the red lines show?
- 5) What do the blue dashed lines show?
- 6) Which caribou herd is closest to you? *Notice that there are no caribou herds south of Edmonton, so if you live in Southern Alberta, your answer will be 'none'.*

Part 4: Caribou Poster

Use the [Woodland Caribou poster](#) to answer the following questions:

- 7) On what Canadian coin is a caribou displayed?
- 8) What animal has a close predator-prey relationship with caribou?
- 9) Name two threats to caribou in Alberta.
- 10) Name two actions individuals, researchers and/or companies are taking to protect caribou.